

V.O. Eindhoven - Route

By car

From 's-Hertogenbosch, Tilburg, Nijmegen

- Take the A2 in the direction of Eindhoven and follow the signs Maastricht/Venlo.
- Note: At the interchange Batadorp, follow the circular road N2, on your right. (New situation; possibly not yet in your navigation system.)
- At exit 32a (High Tech Campus), leave the highway. After the roundabout, turn right at the T-junction.
- Follow the road and after the bend, you will see car park P9 on the left.
- Exit the car park on the north side and building HTC 91 is right in front of you. See map insert.

From Antwerp

- Take the A67 in the direction of Eindhoven. On the A2, follow the signs for Maastricht/Venlo.
- Note: At the interchange De Hogt, follow the circular road N2, on your right. (New situation; possibly not yet in your navigation system.)
- At exit 32a (High Tech Campus), leave the highway. After the roundabout, turn right at the T-junction.
- Follow the road and after the bend, you will see car park P9 on the left.
- Exit the car park on the north side and building HTC 91 is right in front of you. See map insert.

From Maastricht

- Take the A2 in the direction of Eindhoven and follow the signs for Amsterdam/Tilburg.
- Note: At the interchange Leenderheide, follow the circular road N2, on your right. (New situation; possibly not yet in your navigation system.)
- At exit 32a (High Tech Campus), leave the highway. After the roundabout, turn right at the T-junction.

- Follow the road and after the bend, you will see car park P9 on the left.
- Exit the car park on the north side and building HTC 91 is right in front of you. See map insert.

From Venlo

- Take the A2 in the direction of Eindhoven and follow the signs for Amsterdam/Tilburg.
- Note: At the interchange Leenderheide, follow the circular road N2, on your right. (New situation; possibly not yet in your navigation system.)
- At exit 32a (High Tech Campus), leave the highway. After the roundabout, turn right at the T-junction. Follow the road and after the bend, you will see car park P9 on the left.
- Exit the car park on the north side and building HTC 91 is right in front of you. See map insert.

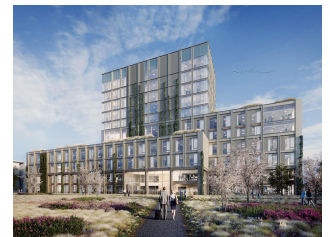
Parking

- Visitors can park their cars for free in for instance parking garage P9.
- Upon leaving the parking garage (on the north side), building HTC 91 is right in front of you.

By public transport

- There are scheduled bus services from the central railway station in Eindhoven to the High Tech Campus Eindhoven.
- Bus 407 departs from the central railway station for the Campus every 20 minutes during peak hours and every 40 minutes off-peak hours on weekdays. Travelling time to the Campus is approximately 10 minutes.
- Alight at stop Vijver.

High Tech Campus
Eindhoven
Building 91, 7th floor
5656 AE Eindhoven
T +31 40 250 33 33



V.O. Eindhoven - Route

